



A Guide to Bears

A Guide to Bears

TORONTO METROPOLITAN UNIVERSITY
RYERSON UNIVERSITY



A Guide to Bears Copyright © by Toronto Metropolitan University is licensed under a [Creative Commons Attribution 4.0 International License](https://creativecommons.org/licenses/by/4.0/) (<https://creativecommons.org/licenses/by/4.0/>), except where otherwise noted.

Contents

Introduction	1
 <u>Ordinary Bears</u>	
Know Your Bear: An Introduction to Bear Species	3
American Black Bear	4
Spectacled bear	8
Sun Bear	9
Brown Bear	10
Sloth Bear	14
Giant Panda	16
Asian Black Bear	17
Polar Bear	19
 <u>Mythical Bears</u>	
Care Bear	23
Ryerson Bear (Ursus Ryersonius)	24
Mystery Bear	25
Caleb	
<u>CC BY (Attribution)</u>	
<i>History of the Mystery Bear</i>	26
<i>Diet of the Mystery Bear</i>	26
Mathematics Bear	28
Callisto	29
Formula Test	30
H5P Bears	33
 <u>Movie Bears</u>	
Paddington Bear	35
 <u>Customizing your Pressbook</u>	
Sample Attribution	42
H5P Quiz	43

Indigenous Fonts	44
Embed a YouTube Video	45
Audio Files	46
Display of Urls in Web and Print Versions of Book	47
Koko Analytics	49
Media Attribution	50
LaTeX Examples	52
Text Boxes	53
Glossary	55

Introduction

The Toronto Metropolitan University *Guide to Bears* is a playground for learning to use the Pressbooks platform. The content is derived from [Wikipedia \(https://en.wikipedia.org/wiki/Bear\)](https://en.wikipedia.org/wiki/Bear) and [Wikimedia \(https://commons.wikimedia.org/wiki/Ursidae\)](https://commons.wikimedia.org/wiki/Ursidae).

For more information, please visit the Toronto Metropolitan University [Open Textbook Authoring Guide \(http://pressbooks.library.ryerson.ca/authorsguide/\)](http://pressbooks.library.ryerson.ca/authorsguide/).

ORDINARY BEARS

These bears are quite ordinary. See later chapters for the extraordinary bears.

Know Your Bear: An Introduction to Bear Species

Bears are mammals of the family Ursidae. Bears are classified as caniforms, or doglike carnivorans, with the pinnipeds being their closest living relatives. Although only eight species of bears are extant, they are widespread, appearing in a wide variety of habitats throughout the Northern Hemisphere and partially in the Southern Hemisphere. Bears are found on the continents of North America, South America, Europe, and Asia.

Common characteristics of modern bears include large bodies with stocky legs, long snouts, shaggy hair, plantigrade paws with five nonretractile claws, and short tails. While the polar bear is mostly **carnivorous**, and the giant panda feeds almost entirely on bamboo, the remaining six species are omnivorous with varied diets.

Species of Bear

Extant species of bears (Family Ursidae) include:

- Giant panda
- Spectacled bear
- Sloth bear
- Sun bear
- Asian black bear
- American black bear
- Brown bear
- Polar bear



An interactive H5P element has been excluded from this version of the text. You can view it online here:

<https://pressbooks.library.torontomu.ca/bearguide/?p=5#h5p-7> (<https://pressbooks.library.torontomu.ca/bearguide/?p=5#h5p-7>)

American Black Bear

The American black bear (*Ursus americanus*) is a medium-sized bear native to North America. It is the continent's smallest and most widely distributed bear species. Black bears are omnivores with their diets varying greatly depending on season and location. They typically live in largely forested areas, but do leave forests in search of food. The American black bear is the world's most common bear species.



(http://pressbooks.library.ryerson.ca/bearguide/wp-content/uploads/sites/9/2016/10/Ursus_americanusDetail.jpg)

American Black Bear. Photo by Greg Hume from Wikimedia Commons (https://commons.wikimedia.org/wiki/File:Ursus_americanusDetail.jpg).

Sub-species of the American Black Bear

There are numerous sub-species of the American black bear.

Sub-species name	Common name	Distribution	Description
<i>Ursus americanus americanus</i>	Eastern black bear	Eastern Montana to the Atlantic coast, from Alaska south and east through Canada to Maine and south to Texas. Thought to be increasing in some regions.	Common to Eastern Canada and U.S. wherever suitable habitat is found. A large-bodied subspecies, almost all specimens have black fur. May very rarely sport a white blaze on chest.
<i>Ursus americanus californiensis</i>	California black bear	Mountain ranges of southern California, north through the Central Valley to southern Oregon	Able to live in varied climates: found in temperate rainforest in the north and chaparral shrubland in the south. Small numbers may feature a cinnamon brown fur.
<i>Ursus americanus carlottae</i>	Haida Gwaii black bear, Queen Charlotte black bear	Haida Gwaii/Queen Charlotte Islands and Alaska	Generally larger than its mainland counterparts with a huge skull and molars, and is found only as a black color phase

Description of the American Black Bear

Build

The skulls of American black bears are broad, with narrow muzzles and large jaw hinges. Females tend to have more slender and pointed faces than males. Their claws are typically black or grayish brown. The ears are small and rounded, and are set well back on the head. Black bears are highly dexterous, being capable of opening screw-top jars and manipulating door latches. They also have great physical strength.

If you would like to see how a baby black bear behaves, you can watch this video:

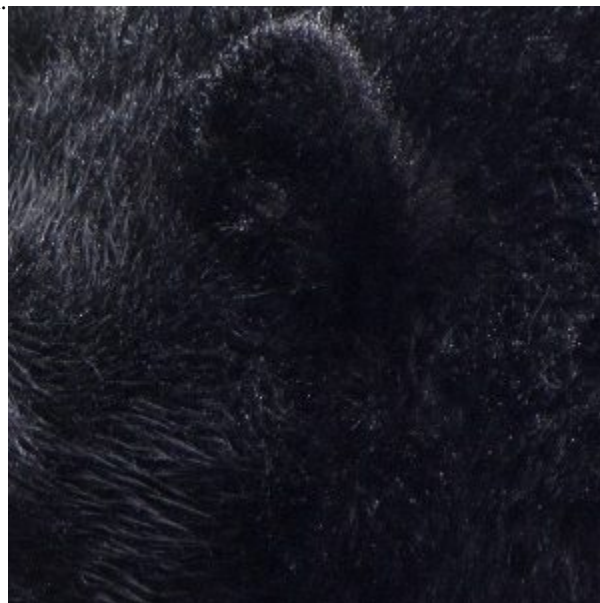


One or more interactive elements has been excluded from this version of the text. You can view them online here:

[#https://pressbooks.library.torontomu.ca/bearguide/?p=30#oembed-1 \(#oembed-1\)](https://pressbooks.library.torontomu.ca/bearguide/?p=30#oembed-1)

Pelage

The fur is soft, with dense underfur and long, coarse, thick guard hairs. Despite their name, black bears show a great deal of color variation. Individual coat colors can range from white, blond, cinnamon, or light brown to dark chocolate brown or to jet black, with many intermediate variations existing. Bluish tinged black bears occur along a portion of coastal Alaska and British Columbia. White to cream colored black bears occur in coastal islands and the adjacent mainland of south-western British Columbia.



The pelage of an American black bear.

Favourite Foods



(<http://pressbooks.library.ryerson.ca/bearguide/wp-content/uploads/sites/9/2016/10/Berries.jpg>)

Fruit enjoyed by black bears

Black bears are omnivorous animals, but mostly eat vegetation and fruits. Despite their tough appearance and long teeth and claws, 85% of a black bear's diet comes from plants. They also like to eat honey and can rip open a whole tree to get into a beehive. Black bears' thick coats protect them from stinging bees, meaning they can eat the honeycombs as fast or as slowly as they like. At night, black bears in the Pacific Northwest fish for salmon in rivers. A few enterprising bears also venture into human-populated areas to steal from trashcans or campsites. In the fall, when they are preparing for hibernation, black bears eat lots of bugs like ants and bees for their protein. Black bears also sometimes catch baby deer, cows and moose, but they are more likely to try to steal carcasses from more active predators like wolves, coyotes and cougars. The extra proteins help them gain fat for their long, annual hibernation.

Source: What Do Bears Eat (<http://www.whatdobearseat.info/>)

Diet of the American Black Bear – How Does it Compare?

How does the diet of the black bear differ from that of the Grizzly Bear?

1. How does it differ in volume?
2. How does it differ in variety

How to Avoid Being Eaten by a Black Bear

Hungry, solo male bears are bad news (bears). There are a few safety tips to keep in mind to avoid being eaten:

1. Travel in groups of 3 (or more)
2. Recognize signs that bears may be in the area
3. Put food and garbage away
4. Have bear spray on hand (yes, it's a thing)
5. Don't be aggressive or hostile towards bears if you see them

Source: [How to Avoid Being Eaten by a Black Bear \(http://www.smithsonianmag.com/science-nature/how-to-avoid-being-eaten-by-a-black-bear-179225111/\)](http://www.smithsonianmag.com/science-nature/how-to-avoid-being-eaten-by-a-black-bear-179225111/)



An interactive H5P element has been excluded from this version of the text. You can view it online here:

<https://pressbooks.library.torontomu.ca/bearguide/?p=30#h5p-8> (<https://pressbooks.library.torontomu.ca/bearguide/?p=30#h5p-8>)

Indigenous Names

ᐱᐳᐃᐅ – Cree-English dictionary (<https://glosbe.com/cr/en/%E1%92%8B%E1%94%90%E1%94%AE%E1%92%84>)

Bear – ᐱᐳᐃᐅ

Polar Bear – ᐱᐳᐃᐅᐅᐅ

Spectacled bear

The spectacled bear otherwise known as the Andean bear. The most famous being Paddington. The spectacled bear's vision changes dramatically with the seasons. During the summer months, they need photo-sensitive lenses. While hibernating during the winter months, they need a soft, micro-bio mask. So once his Aunt Lucy went to live in the 'Home for Retired Bears' in Lima, Paddington moved to London where the gloomy weather is more conducive to better vision.

Spectacle bear cat facts

(Click to expand facts)



An interactive H5P element has been excluded from this version of the text. You can view it online here:

<https://pressbooks.library.torontomu.ca/bearguide/?p=41#h5p-5> (<https://pressbooks.library.torontomu.ca/bearguide/?p=41#h5p-5>)

Learning Objectives

Type your learning objectives here.

- bear species
- diet

Sun Bear

The sun bear (*Helarctos malayanus*) is a bear found in tropical forest habitats of Southeast Asia. It is classified as Vulnerable by IUCN as the large-scale deforestation that has occurred throughout Southeast Asia over the past three decades has dramatically reduced suitable habitat for the sun bear. The global population is thought to have declined by more than 30% over the past three bear generations.

The sun bear is recognized as the smallest of the bear species. Its head-and-body length is between 100cm and 140cm and the bear's height is almost 70cm. The weight of adults varies greatly, from anywhere between 25 to 65kg. Alongside being the smallest of bears, the sun bear also leads the most **arboreal** lifestyle amongst the bear species. They are very great climbers, and like to sunbathe or even sleep 2 to 7 metres above ground in trees.

Learning Objectives:

1. Learn how to recognize a sun bear from a regular bear!
2. Honey Bear = Sun Bear



Brown Bear

Learning Objectives

Type your learning objectives here.

- First
- Second

Exercises

Type your exercises here.

1. Go into the wild. Cook something that a bear would be attracted to. Wait for bears to arrive. Document the differences between the bears. Be cautious!
2. Second

The brown bear (*Ursus arctos*) is a large bear with the widest distribution of any living ursid¹. It is one of the two largest terrestrial carnivorans alive today, rivaled in body size only by its close cousin, the polar bear (*Ursus maritimus*). There are several recognized subspecies, many of which are quite well-known within their native ranges, found in the brown bear species.

Sub-species: The Grizzly Bear

The grizzly bear (*Ursus arctos* ssp.) less commonly called the silvertip bear, is any North American morphological form or subspecies of brown bear². Scientists do not use the name grizzly bear but call it the North American brown bear.

1. Servheen, C., Herrero, S., Peyton, B., Pelletier, K., Moll, K., & Moll, J. (Eds.). (1999). *Bears: status survey and conservation action plan* (Vol. 44). IUCN.
2. Schwartz, C. C., Miller, S. D. and Haroldson, M. A. (2003). "Grizzly bear" (http://www.gsseser.com/RMAteachers/Grizzly_Chapter.pdf). pp. 556–586 in G. A. Feldhamer, B. C. Thompson and J. A. Chapman, eds. *Wild Mammals of North America: Biology, Management, and Conservation*. Johns Hopkins University Press, Baltimore, MD.



Grizzly Bear, from Wikimedia Commons (<https://commons.wikimedia.org/wiki/File:Grizzlybear55.jpg>)

Fun Fact: Lewis and Clark named it to be grisley or “grizzly”, which could have meant “grizzled”; that is, golden and grey tips of the hair or “fear-inspiring”. Nonetheless, after careful study, naturalist George Ord formally classified it in 1815 – not for its hair, but for its character – as *Ursus horribilis* (“terrifying bear”).

Sub-species: East Siberian brown bear

The East Siberian brown bear (*Ursus arctos collaris*) is a subspecies of brown bear which ranges from eastern Siberia, beginning at the Yenisei river, as far as Trans-Baikaliya, the Stanovoy Range, the Lena River, Kolyma and generally throughout Yakutia and the Altai Mountains. The subspecies is also present in Northern Mongolia.³

East Siberian bears are intermediate in size to Eurasian brown bears and Kamchatka Brown Bears, though large individuals can attain the size of the latter. Their skulls are invariably larger than those of Eurasian brown bears, and

3. *Mammals of the Soviet Union* Vol.II Part 1a, SIRENIA AND CARNIVORA (Sea cows; Wolves and Bears), V.G Heptner and N.P Naumov editors, Science Publishers, Inc. USA. 1998. ISBN 1-886106-81-9

are apparently larger than those of Far Eastern brown bears.⁴ Adult males have skulls measuring 32.6-43.1 cm in length and 31.2-38.5 cm wide at the zygomatic arches. They have long, dense and soft fur which is similar in colour to that of Eurasian brown bears, though darker coloured individuals predominate. Originally, Cuvier's trinomial definition for this subspecies was limited to brown bear populations in the upper Yenisei river, in response to bears there sporting well developed white collars. The subspecies has since been reclassified as encompassing populations formerly classed as *yeniseensis* and *sibiricus*, though the latter two lack the collar.⁵ Siberian bears tend to be much bolder toward humans than their shyer, more persecuted European counterparts. Siberian bears regularly destroy hunters' storages and huts where there is food.⁶ They are also more carnivorous than their European counterparts, and do not seem to like honey. They hunt mountain hares and ungulates such as reindeer, wapiti or moose by ambushing them from pine trees.⁷



East Siberian Brown Bear illustration, from Wikimedia Commons

Standard Textbox

4. *Mammals of the Soviet Union Vol.II Part 1a, SIRENIA AND CARNIVORA* (Sea cows; Wolves and Bears), V.G Heptner and N.P Naumov editors, Science Publishers, Inc. USA. 1998. ISBN 1-886106-81-9
5. *Mammals of the Soviet Union Vol.II Part 1a, SIRENIA AND CARNIVORA* (Sea cows; Wolves and Bears), V.G Heptner and N.P Naumov editors, Science Publishers, Inc. USA. 1998. ISBN 1-886106-81-9
6. [WOLVES, BEARS AND HUMAN ANTI-PREDATOR ADAPTATIONS \(http://www.iugb-moscow2009.ru/cd/doc_eng/pz1/Baskin_docladP1_eng.pdf\)](http://www.iugb-moscow2009.ru/cd/doc_eng/pz1/Baskin_docladP1_eng.pdf)
7. *The Leisure hour, Volume 4*. Publisher s.n., 1855. Original from the New York Public Library (https://books.google.ca/books?id=f_wRAAAAYAAJ&pg=PA72&dq=siberian+bear&lr=&as_drrb_is=b&as_minm_is=1&as_miny_is=1800&as_maxm_is=12&as_maxy_is=1900&as_brr=3&ei=ZyXrSuCiDY6MNvjNzIEM&redir_esc=y#v=onepage&q=siberian%20bear&f=false)

Type your textbox content here.

Examples

Type your examples here.

- First
- Second

Sloth Bear

The sloth bear (*Melursus ursinus*), also known as the labiated bear, is a nocturnal insectivorous bear species native to the Indian subcontinent. The sloth bear evolved from ancestral brown bears during the Pleistocene and shares features found in insect-eating mammals through convergent evolution. The population isolated in Sri Lanka is considered a subspecies. Unlike brown and black bears, sloth bears have lankier builds, long, shaggy coats that form a mane around the face, long, sickle-shaped claws, and a specially adapted lower lip and palate used for sucking insects.

Although largely considered to be an extension of the brown bears and hence insect-eating mammals, the Sloth bear is also known for its sweet tooth, like the other bears, as well as a large variety of vegetables and fruit.



These bears are known to at times have the tendency to fight for food. Food is a strategic cause of behavioural attitude in sloth bears. [According to Wikipedia, \(https://en.wikipedia.org/wiki/Sloth_bear\)](https://en.wikipedia.org/wiki/Sloth_bear) sloth bear attacks accounted for the deaths of 48 people and the injuring of 686 others between 1989 and 1994, probably due in part to the density of population and competition for food sources. According to Wikipedia, Sloth bears are distinguished from [Asian black bears \(https://en.wikipedia.org/wiki/Asian_black_bear\)](https://en.wikipedia.org/wiki/Asian_black_bear) by their lankier builds, longer, shaggier coats, pale muzzles, and white claws.

The following is a video of sloth bears playing :



One or more interactive elements has been excluded from this version of the text. You can view them online here: [#oembed-1](https://pressbooks.library.torontomu.ca/bearguide/?p=43#oembed-1)

Key Takeaways

Type your key takeaways here.

- First: Don't mess with the Sloth bear, even though it's only a brown bear and really sloth.
- Second: Sloth bears are nocturnal
- Third: Sloth bears from the South Asia

Key Takeaways

Sloth bears likely view humans as potential predators, as their reactions to them (roaring, followed by retreat or charging) are similar to those evoked in the presence of tigers and leopards.

Giant Panda

The giant panda (*Ailuropoda melanoleuca*, literally “black and white cat-foot”; Chinese: 大熊猫; pinyin: dà xióng māo, literally “big bear cat”), also known as panda bear or simply panda, is a bear native to south central China. It is easily recognized by the large, distinctive black patches around its eyes, over the ears, and across its round body. The name “giant panda” is sometimes used to distinguish it from the unrelated red panda.

From the [National Geographic](http://www.nationalgeographic.com/animals/mammals/g/giant-panda/). (<http://www.nationalgeographic.com/animals/mammals/g/giant-panda/>)

Common Name: Giant Panda

Scientific Name: *Ailuropoda melanoleuca*

Type: Mammals

Diet: **Omnivore**

Average life span in The Wild: 20 years

Size: 4 to 5 ft

Weight: 300 lbs

From YouTube



One or more interactive elements has been excluded from this version of the text. You can view them online here:

[#https://pressbooks.library.torontomu.ca/bearguide/?p=38#oembed-1](https://pressbooks.library.torontomu.ca/bearguide/?p=38#oembed-1) (#oembed-1)

Asian Black Bear

Learning Objectives

Type your learning objectives here.

- First
- Second

Introduction

The Asian black bear (*Ursus thibetanus*, previously known as *Selenarctos thibetanus*) is also known as **moon** bear and white-chested bear. It is a medium-sized bear species and largely adapted to **arboreal** life. It lives in the Himalayas, in the northern parts of the Indian subcontinent, Korea, northeastern China, the Russian Far East, Mongolia, the Honshū and Shikoku islands of Japan, and Taiwan.

Foods

Asian black bears are not as specialized in their **diet** as pandas are: while pandas depend on a constant supply of low calorie, yet abundant foodstuffs, black bears are more opportunistic and have opted for a nutritional boom-or-bust economy. They thus gorge themselves on a variety of seasonal high calorie foods, storing the excess calories as fat, and then hibernate during times of scarcity.¹

Asian black bears are omnivorous, and will feed on [insects \(https://en.wikipedia.org/wiki/Insects\)](https://en.wikipedia.org/wiki/Insects), [beetle \(https://en.wikipedia.org/wiki/Beetle\)](https://en.wikipedia.org/wiki/Beetle), [larvae \(https://en.wikipedia.org/wiki/Larvae\)](https://en.wikipedia.org/wiki/Larvae), [invertebrates \(https://en.wikipedia.org/wiki/Invertebrate\)](https://en.wikipedia.org/wiki/Invertebrate), [termites \(https://en.wikipedia.org/wiki/Termites\)](https://en.wikipedia.org/wiki/Termites), [grubs \(https://en.wikipedia.org/wiki/Larva\)](https://en.wikipedia.org/wiki/Larva), [carrion \(https://en.wikipedia.org/wiki/Carrion\)](https://en.wikipedia.org/wiki/Carrion), [bees \(https://en.wikipedia.org/wiki/Bee\)](https://en.wikipedia.org/wiki/Bee), [eggs \(https://en.wikipedia.org/wiki/Egg_\(biology\)\)](https://en.wikipedia.org/wiki/Egg_(biology)), [garbage \(https://en.wikipedia.org/wiki/Waste\)](https://en.wikipedia.org/wiki/Waste), [mushrooms \(https://en.wikipedia.org/wiki/Mushrooms\)](https://en.wikipedia.org/wiki/Mushrooms), [grasses \(https://en.wikipedia.org/wiki/Grass\)](https://en.wikipedia.org/wiki/Grass), [fruits \(https://en.wikipedia.org/wiki/Fruit\)](https://en.wikipedia.org/wiki/Fruit), [nuts \(https://en.wikipedia.org/wiki/Nut_\(fruit\)\)](https://en.wikipedia.org/wiki/Nut_(fruit)), [seeds \(https://en.wikipedia.org/wiki/Seeds\)](https://en.wikipedia.org/wiki/Seeds), [honey \(https://en.wikipedia.org/wiki/Honey\)](https://en.wikipedia.org/wiki/Honey), [herbs \(https://en.wikipedia.org/wiki/Herb\)](https://en.wikipedia.org/wiki/Herb), [acorns \(https://en.wikipedia.org/wiki/Acorn\)](https://en.wikipedia.org/wiki/Acorn), [cherries \(https://en.wikipedia.org/wiki/Cherry\)](https://en.wikipedia.org/wiki/Cherry), [dogwood \(https://en.wikipedia.org/wiki/Dogwood\)](https://en.wikipedia.org/wiki/Dogwood), and [grain \(https://en.wikipedia.org/wiki/Grain\)](https://en.wikipedia.org/wiki/Grain)

1. Hwang, M. H. (2003). Ecology of the Asiatic black bear and people-bear interactions in Yushan National Park, Taiwan. Ph.D. thesis, University of Minnesota.

Reproduction and Life Cycle

Breeding season starts earlier than brown hello bears from mid June to mid August.

Distribution and Habitat

China

Korea



One or more interactive elements has been excluded from this version of the text. You can view them online here:
[#https://pressbooks.library.torontomu.ca/bearguide/?p=47#oembed-1](https://pressbooks.library.torontomu.ca/bearguide/?p=47#oembed-1) (#oembed-1)

Key Takeaways

Type your key takeaways here.

- Asian Black bears are omnivorous
- Second

Polar Bear



“Free Coca Cola Polar Bear from buying 3 8-pk 12oz classic coke” (https://www.flickr.com/photos/stupid_systemus/11228675786/) by [stupid systemus](https://www.flickr.com/people/stupid_systemus/) (https://www.flickr.com/people/stupid_systemus/) is licensed under [CC BY 2.0](https://creativecommons.org/licenses/by/2.0) (<https://creativecommons.org/licenses/by/2.0>)

Learning Objectives

What students should take from this chapter

- What you need to know about polar bears
- Polar bears in culture
- The commercialization of polar bears (they love Coke!)

Polar Bears

The polar bear (*Ursus maritimus*) is a carnivorous bear whose native range lies largely within the Arctic Circle,

encompassing the Arctic Ocean, its surrounding seas and surrounding land masses. It is a large bear, approximately the same size as the omnivorous Kodiak bear (*Ursus arctos middendorffi*).

Polar Bears in Culture

There are plenty of stories that circulate among the people of the Arctic involving the Polar Bears. These stories have been passed down from generation to generation. They view the Polar Bear as a mystic creature that is very spiritual in nature. It is one of the animals they show the most admiration for among their culture today. Some of these stories talk about the Polar Bears covering their noses with their paws while hunting.

This is just part of such stories though as there isn't any research or observations of Polar Bears to prove it. In fact, there are many stories and legends that involve people being Polar Bears in the form of their human souls. As a result, you will see that many cultures have quite a bit of respect for these grand creatures.

A terrific family film is called the Golden Compass. It is a screenplay that has been based on a best selling Novel by the same name. One of the constant themes is that human souls are alive in the animals in the world. One of the animals portrayed in the movie and the novel is the Polar Bear. Of course these Polar Bears take on a historical look too because they are to be from the past, before the complete evolution actually occurred. This is a very good point for the author to make, and it does work very well within this particular story line.

Children love stories that contain animals, and you will find quite a few of them at lower age levels. Many of them also have great graphics for them to look at as you read them the story. Polar bears are portrayed as fun creatures, and you can't help but smile when you see the photos of the cubs playing.

The Arctic Tale which was released in 2007 is a great observation of a Polar Bear and her cubs. It offers real life experiences for the entire family to enjoy. It is well done by National Geographic. The story starts out with the young cubs and follows them until they are 10 years of age. As you watch them grow and interact, you see first hand the parenting styles of these animals. You also see how the climate changes affect their ability to survive due to the food source being scarce.

Of course there are also those films and stories out there that portray Polar Bears as mean and aggressive meat eating animals. These are very loosely based on facts instead of actual events or behaviors of these bears. Sadly, this is the form of them that so many people seem to have stuck in their minds. As a result they aren't concerned at all that the Polar Bear may one day be extinct.

There is no shortage of materials out there in popular culture relating to the Polar Bear. They including books, documentaries, cartoons, and films. Exploring them is a great way to entertain yourself as well as to see more about Polar Bears. It is important though to remember that some of these materials are based on fact while others are based on fiction. Realizing where that line is will help to ensure you don't walk away with misconceptions about the Polar Bear.

The Commercialization of the Polar Bear Image

One of the most popular images of Polar Bears in popular culture has to do with the soft drink Coca Cola. In many of their commercials around Christmas time they portray a Polar Bear family having fun on the ice and drinking the soda. Many viewers love the younger Polar bears in them and can't help but smiling as they think of them.



Key Takeaways

Polar bears are awesome! and cool!

Exercises

1. Find 3 photos of polar bears.
2. Find what to do if you run into a polar bear.
3. Do polar bears play the drums?

MYTHICAL BEARS

Definition –

Here is a video



One or more interactive elements has been excluded from this version of the text. You can view them online here:
[#https://pressbooks.library.torontomu.ca/bearguide/?p=115#oembed-1](https://pressbooks.library.torontomu.ca/bearguide/?p=115#oembed-1) (#oembed-1)

Care Bear

A Care Bear has rainbow coloured fur and magical powers.



Favourite Food

A Care Bear's favourite food is Maynard's Swedish Berries and Fuzzy Peach. For more information on Swedish Berries, click [here](https://en.wikipedia.org/wiki/Swedish_berries). (https://en.wikipedia.org/wiki/Swedish_berries)

Care Bears Countdown



One or more interactive elements has been excluded from this version of the text. You can view them online here:

[#oembed-1](https://pressbooks.library.torontomu.ca/bearguide/?p=468#oembed-1) ([#oembed-1](https://pressbooks.library.torontomu.ca/bearguide/?p=468#oembed-1))

Ryerson Bear (Ursus Ryersonius)

Attention – This bear is now extinct.

There have been rumours that there is a bear roaming the Ryerson campus. The bear is very shy and only very patient people might be able to spot the bear roaming the campus during the night.



This is a rare photo of the Ryerson bear. It is not 100% clear how the bear got the Ryerson colours onto his fur. It might be possible that extensive exposure to the Ryerson logo caused this type of mimicry so the bear would blend in better to the campus environment.

If you happen to catch a glimpse of the Ryerson bear, please share your photo and add it to this chapter.

Mystery Bear

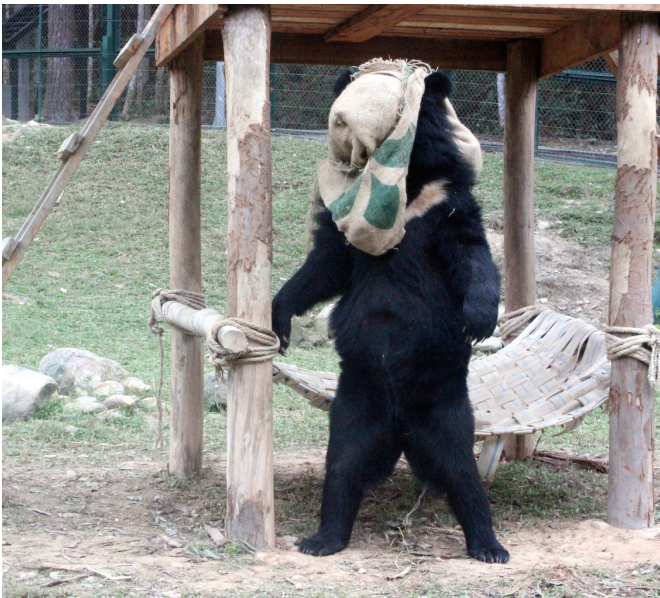
CALEB

Urusa Mysterious

Learning Objectives

Type your learning objectives here.

- Learn about the mystery bear
- Appreciate the mystery bear



This bear is a mystery and has never been seen. A total mystery.

Over the years this bear has wandered the earth in search of another mystery bear, but they are so hard to find that they can't even find each other. Once in a while someone swears that they are smelling a **mystery bear**, but these reports are highly suspect.

Lorem ipsum dolor sit amet, consectetur adipiscing elit, sed do eiusmod tempor incididunt ut labore et dolore magna aliqua. Ut enim ad minim veniam, quis nostrud exercitation ullamco laboris nisi ut aliquip ex ea commodo consequat. Duis aute irure dolor in reprehenderit in voluptate velit esse cillum dolore eu fugiat nulla pariatur. Excepteur sint occaecat cupidatat non proident, sunt in culpa qui officia deserunt mollit anim id est laborum.

Key Takeaways

While reading this incredible chapter on the mystery bear, try to spot these takeaways:

- You will never see the mystery bear, so give up on the idea

- You might be wondering how we know that the mystery bear exists, but you should stop

History of the Mystery Bear

The mystery bear was first not seen early in the beginning of finding bears. People were finding bears, being eaten by bears, and generally enjoying bears. BUT! They were not successful in finding the mystery bear and so it remained a mystery.

Diet of the Mystery Bear

Lorem ipsum dolor sit amet, consectetur adipiscing elit, sed do eiusmod tempor incididunt ut labore et dolore magna aliqua. Ut enim ad minim veniam, quis nostrud exercitation ullamco laboris nisi ut aliquip ex ea commodo consequat. Duis aute irure dolor in reprehenderit in voluptate velit esse cillum dolore eu fugiat nulla pariatur. Excepteur sint occaecat cupidatat non proident, sunt in culpa qui officia deserunt mollit anim id est laborum.

Lorem ipsum dolor sit amet, consectetur adipiscing elit, sed do eiusmod tempor incididunt ut labore et dolore magna aliqua. Ut enim ad minim veniam, quis nostrud exercitation ullamco laboris nisi ut aliquip ex ea commodo consequat. Duis aute irure dolor in reprehenderit in voluptate velit esse cillum dolore eu fugiat nulla pariatur. Excepteur sint occaecat cupidatat non proident, sunt in culpa qui officia deserunt mollit anim id est laborum. Lorem ipsum dolor sit amet, consectetur adipiscing elit, sed do eiusmod tempor incididunt ut labore et dolore magna aliqua. Ut enim ad minim veniam, quis nostrud exercitation ullamco laboris nisi ut aliquip ex ea commodo consequat. Duis aute irure dolor in reprehenderit in voluptate velit esse cillum dolore eu fugiat nulla pariatur. Excepteur sint occaecat cupidatat non proident, sunt in culpa qui officia deserunt mollit anim id est laborum.

Lorem ipsum dolor sit amet, consectetur adipiscing elit, sed do eiusmod tempor incididunt ut labore et dolore magna aliqua. Ut enim ad minim veniam, quis nostrud exercitation ullamco laboris nisi ut aliquip ex ea commodo consequat. Duis aute irure dolor in reprehenderit in voluptate velit esse cillum dolore eu fugiat nulla pariatur. Excepteur sint occaecat cupidatat non proident, sunt in culpa qui officia deserunt mollit anim id est laborum. Lorem ipsum dolor sit amet, consectetur adipiscing elit, sed do eiusmod tempor incididunt ut labore et dolore magna aliqua. Ut enim ad minim veniam, quis nostrud exercitation ullamco laboris nisi ut aliquip ex ea commodo consequat. Duis aute irure dolor in reprehenderit in voluptate velit esse cillum dolore eu fugiat nulla pariatur. Excepteur sint occaecat cupidatat non proident, sunt in culpa qui officia deserunt mollit anim id est laborum.



A typical remnant of the passage of the mystery bear.

Mathematics Bear

This page contains formulas used by mathematically inclined bears. Very few of these bears are found in the wild. It is believed that a small family live near Meyrin, Switzerland.

Albert Einstein's famous formula $E = mc^2$ can be used

Embedded Geogebra Content (using H5P)



An interactive H5P element has been excluded from this version of the text. You can view it online here:

<https://pressbooks.library.torontomu.ca/bearguide/?p=359#h5p-16> (<https://pressbooks.library.torontomu.ca/bearguide/?p=359#h5p-16>)

Embedded Geogebra Content (Using an iframe embed)



One or more interactive elements has been excluded from this version of the text. You can view them online here:

<https://pressbooks.library.torontomu.ca/bearguide/?p=359> (<https://pressbooks.library.torontomu.ca/bearguide/?p=359>)

At first, we sample $f(x)$ in the N (N is odd) equidistant points around x^* :

```
\[
  f_k = f(x_k), \quad x_k = x^* + kh, \quad k = -\frac{N-1}{2}, \dots, \frac{N-1}{2}
\]
```

where h is some step.

Then we interpolate points $\{(x_k, f_k)\}$ by polynomial

```
\begin{equation} \label{eq:poly}
  P_{N-1}(x) = \sum_{j=0}^{N-1} a_j x^j
\end{equation}
```

Its coefficients $\{a_j\}$ are found as a solution of system of linear equations:

```
\begin{equation} \label{eq:sys}
  \left\{ P_{N-1}(x_k) = f_k \right\}, \quad \text{quad } k = -\frac{N-1}{2}, \dots, \frac{N-1}{2}
\end{equation}
```

Here are references to existing equations: (*refeq : poly*), (*refeq : sys*).

Here is reference to non-existing equation (*refeq : unknown*).

Callisto

[Callisto \(Mythology\) \(https://en.wikipedia.org/wiki/Callisto_\(mythology\)\)](https://en.wikipedia.org/wiki/Callisto_(mythology))

According to Greek mythology, Callisto was a **nymph** and a follower of **Artemis**. Zeus developed an attraction to Callisto and turned himself into Artemis to lure Callisto. After Callisto became pregnant, she was expelled from Artemis' hunting group. When Hera, Zeus's wife, found out about this, she turned Callisto into a bear. As she was about to be hunted by her son, they were set among the stars as Ursa Major and Minor ("the Great Bear" and "the Little Bear" constellations) by Zeus.



[Juno turning Callisto into a Bear \(https://commons.wikimedia.org/wiki/File:Juno_Turning_Callisto_into_a_Bear_LACMA_M.76.92.6.jpg\)](https://commons.wikimedia.org/wiki/File:Juno_Turning_Callisto_into_a_Bear_LACMA_M.76.92.6.jpg) (Public Domain)



One or more interactive elements has been excluded from this version of the text. You can view them online here:

[#oembed-1](https://pressbooks.library.torontomu.ca/bearguide/?p=509#oembed-1)

Formula Test

```
[latexpage]
\begin{tikzpicture}
[+preamble]
\usepackage{tikz}
\usepackage{pgfplots}
\pgfplotsset{compat=newest}
[/preamble]
\begin{axis}
\addplot3[surf,domain=0:360,samples=40] {cos(x)*cos(y)};
\end{axis}
\end{tikzpicture}
```

Example 7.3.5

A person has four keys and only one key fits to the lock of a door. What is the probability that the locked door can be unlocked in at most three tries?

Solution

Let U be the event that the door has been unlocked and L be the event that the door has not been unlocked. We illustrate with a tree diagram.

```
\documentclass{article}
\usepackage{tikz}
\begin{document}
\begin{tikzpicture}[grow=right, sloped]
\tikzstyle{level 1}=[level distance=2cm, sibling distance=4cm]
\tikzstyle{level 2}=[level distance=2cm, sibling distance=2cm]
\node {}
child {
node[label=right:
{$L_1$}] {}
edge from parent
node[below] {$3/4$}
child {
node[label=right:
{$L_2$}] {}
edge from parent
node[below] {$2/3$}
child {
node[label=right:
{$L_3$}] {}
edge from parent
node[below] {$1/2$}
}
child {
node[label=right:
{$U_3$}] {}
edge from parent
```

```

node[above]  $\{1/2\}$ 
}
}
child {
node[label=right:
 $\{U_2\}$ ] {}
edge from parent
node[above]  $\{1/3\}$ 
}
}
child {
node[label=right:
 $\{U_1\}$ ] {}
edge from parent
node[above]  $\{1/4\}$ 
};
\end{tikzpicture}
\end{document}

```

First Try:

```

\begin{tikzpicture}[grow=right, sloped]
\tikzstyle{level 1}=[level distance=2cm, sibling distance=3cm]
\node {}
child {
node[label=right:
 $\{L\}$ ] {}
edge from parent
node[below]  $\{3/4\}$ 
}
child {
node[label=right:
 $\{U=1/4\}$ ] {}
edge from parent
node[above]  $\{1/4\}$ 
};
\end{tikzpicture}

```

Second Try:

```

\begin{tikzpicture}[grow=right, sloped]
\tikzstyle{level 1}=[level distance=2cm, sibling distance=3cm]
\node {}
child {
node[label=right:
 $\{L\}$ ] {}
edge from parent
node[below]  $\{2/3\}$ 
}
child {
node[label=right:
 $\{U=(3/4)(1/3)\}$ ] {}

```

```

edge from parent
node[above] {$1/3$}
};
\end{tikzpicture}$
Third Try:
\begin{tikzpicture}[grow=right, sloped]
\tikzstyle{level 1}=[level distance=2cm, sibling distance=3cm]
\node {}
child {
node[label=right:
{$L$}] {}
edge from parent
node[below] {$1/2$}
}
child {
node[label=right:
{$U=(3/4)(2/3)(1/2)$}] {}
edge from parent
node[above] {$1/2$}
};
\end{tikzpicture}

```

The probability of unlocking the door in the first try = $1/4$.

The probability of unlocking the door in the second try = $(3/4)(1/3) = 1/4$.

The probability of unlocking the door in the third try = $(3/4)(2/3)(1/2) = 1/4$.

Therefore, the probability of unlocking the door in at most three tries = $1/4 + 1/4 + 1/4 = 3/4$.

H5P Bears



An interactive H5P element has been excluded from this version of the text. You can view it online here:

<https://pressbooks.library.torontomu.ca/bearguide/?p=860#h5p-8> (<https://pressbooks.library.torontomu.ca/bearguide/?p=860#h5p-8>)



An interactive H5P element has been excluded from this version of the text. You can view it online here:

<https://pressbooks.library.torontomu.ca/bearguide/?p=860#h5p-11> (<https://pressbooks.library.torontomu.ca/bearguide/?p=860#h5p-11>)



An interactive H5P element has been excluded from this version of the text. You can view it online here:

<https://pressbooks.library.torontomu.ca/bearguide/?p=860#h5p-7> (<https://pressbooks.library.torontomu.ca/bearguide/?p=860#h5p-7>)

MOVIE BEARS

Paddington Bear

Paddington is a very very famous bear. He was my son's favourite bear as a child and when he visited London we went to see the statue at Paddington station.



This is what Wikipedia says about Paddington:

Paddington Bear is a fictional character in [children's literature](https://en.wikipedia.org/wiki/Children%27s_literature) (https://en.wikipedia.org/wiki/Children%27s_literature). He first appeared on 13 October 1958 in the children's book *A Bear Called Paddington* and has been featured in more than twenty books written by British author [Michael Bond](https://en.wikipedia.org/wiki/Michael_Bond) (https://en.wikipedia.org/wiki/Michael_Bond) and illustrated by [Peggy Fortnum](https://en.wikipedia.org/wiki/Peggy_Fortnum) (https://en.wikipedia.org/wiki/Peggy_Fortnum) and other artists.^[1] (https://en.wikipedia.org/wiki/Paddington_Bear#cite_note-1)

The friendly [bear](https://en.wikipedia.org/wiki/Bear) (<https://en.wikipedia.org/wiki/Bear>) from “darkest [Peru](https://en.wikipedia.org/wiki/Peru) (<https://en.wikipedia.org/wiki/Peru>) —with his old hat, battered suitcase, [duffel coat](https://en.wikipedia.org/wiki/Duffel_coat) (https://en.wikipedia.org/wiki/Duffel_coat) and love of [marmalade](https://en.wikipedia.org/wiki/Marmalade) (<https://en.wikipedia.org/wiki/Marmalade>) —has become a classic character from [British children's literature](https://en.wikipedia.org/wiki/English_literature#Genre_fiction_in_the_twentieth-century) (https://en.wikipedia.org/wiki/English_literature#Genre_fiction_in_the_twentieth-century).^[2] (https://en.wikipedia.org/wiki/Paddington_Bear#cite_note-2)

An [anthropomorphised](https://en.wikipedia.org/wiki/Anthropomorphism) (<https://en.wikipedia.org/wiki/Anthropomorphism>) bear, Paddington is always polite – addressing people as “Mr”, “Mrs” and “Miss”, rarely by first names – and kindhearted, though he inflicts hard stares on those who incur his disapproval.^[3] (https://en.wikipedia.org/wiki/Paddington_Bear#cite_note-3) He has an endless capacity for innocently getting into trouble, but he is known to “try so hard to get things right.” He was discovered in [London Paddington station](https://en.wikipedia.org/wiki/London_Paddington_station) (https://en.wikipedia.org/wiki/London_Paddington_station), by the (human) Brown family who adopted him, and thus he gives his full name as “Paddington Brown” (his original Peruvian name being too hard for them to pronounce).

As of June 2016, the Paddington Bear franchise was owned by [Vivendi](https://en.wikipedia.org/wiki/Vivendi) (<https://en.wikipedia.org/wiki/Vivendi>)’s [StudioCanal](https://en.wikipedia.org/wiki/StudioCanal) (<https://en.wikipedia.org/wiki/StudioCanal>). Bond, however, continued to own the publishing rights to his series, which was licensed to [HarperCollins](https://en.wikipedia.org/wiki/HarperCollins) (<https://en.wikipedia.org/wiki/HarperCollins>) in April 2017 (two months before his death) for the next six years (up to 2023).^[4] (https://en.wikipedia.org/wiki/Paddington_Bear#cite_note-4)

Paddington books have been translated into 30 languages across 70 titles and have sold more than 30 million copies worldwide. A much loved fictional character in the UK, a Paddington Bear soft toy was chosen by British tunnelers as the first item to pass through to their French counterparts when the two sides of the [Channel Tunnel](https://en.wikipedia.org/wiki/Channel_Tunnel) (https://en.wikipedia.org/wiki/Channel_Tunnel) were linked in 1994.^[5] (https://en.wikipedia.org/wiki/Paddington_Bear#cite_note-5) Paddington Bear has been adapted for television, films and appeared in commercials. The

critically acclaimed and commercially successful films [Paddington \(https://en.wikipedia.org/wiki/Paddington_\(film\)\)](https://en.wikipedia.org/wiki/Paddington_(film)) (2014) and [Paddington 2 \(https://en.wikipedia.org/wiki/Paddington_2\)](https://en.wikipedia.org/wiki/Paddington_2) (2017) were both nominated for the [BAFTA Award for Outstanding British Film \(https://en.wikipedia.org/wiki/BAFTA_Award_for_Outstanding_British_Film\)](https://en.wikipedia.org/wiki/BAFTA_Award_for_Outstanding_British_Film).

History

Origin

[Michael Bond \(https://en.wikipedia.org/wiki/Michael_Bond\)](https://en.wikipedia.org/wiki/Michael_Bond) based Paddington Bear on a lone [teddy bear \(https://en.wikipedia.org/wiki/Teddy_bear\)](https://en.wikipedia.org/wiki/Teddy_bear) he noticed on a shelf in a London store near [Paddington Station \(https://en.wikipedia.org/wiki/London_Paddington_station\)](https://en.wikipedia.org/wiki/London_Paddington_station) on Christmas Eve 1956, which he bought as a present for his wife. He may have also been inspired by the sight, during World War II, of [Jewish refugee children from Europe \(https://en.wikipedia.org/wiki/Kindertransport\)](https://en.wikipedia.org/wiki/Kindertransport), or of [London children being evacuated \(https://en.wikipedia.org/wiki/Evacuations_of_civilians_in_Britain_during_World_War_II\)](https://en.wikipedia.org/wiki/Evacuations_of_civilians_in_Britain_during_World_War_II) to the countryside.^[6] [\(https://en.wikipedia.org/wiki/Paddington_Bear#cite_note-6\)](https://en.wikipedia.org/wiki/Paddington_Bear#cite_note-6)

The bear inspired Bond to write a story; and, in ten days, he had written the first book. The book was given to his agent, Harvey Unna. *A Bear Called Paddington* was first published on 13 October 1958 by [William Collins & Sons \(https://en.wikipedia.org/wiki/William_Collins_%26_Sons\)](https://en.wikipedia.org/wiki/William_Collins_%26_Sons).^[7] [\(https://en.wikipedia.org/wiki/Paddington_Bear#cite_note-7\)](https://en.wikipedia.org/wiki/Paddington_Bear#cite_note-7) ^[8] [\(https://en.wikipedia.org/wiki/Paddington_Bear#cite_note-8\)](https://en.wikipedia.org/wiki/Paddington_Bear#cite_note-8)

Stuffed toy

The first Paddington Bear [stuffed toy \(https://en.wikipedia.org/wiki/Stuffed_toy\)](https://en.wikipedia.org/wiki/Stuffed_toy) to be manufactured was created in 1972 by Gabrielle Designs, a small business run by Shirley and Eddie Clarkson, with the prototype made as a Christmas present for their children Joanna and [Jeremy Clarkson \(https://en.wikipedia.org/wiki/Jeremy_Clarkson\)](https://en.wikipedia.org/wiki/Jeremy_Clarkson) (who later became a well-known British TV presenter and writer).^[9] [\(https://en.wikipedia.org/wiki/Paddington_Bear#cite_note-9\)](https://en.wikipedia.org/wiki/Paddington_Bear#cite_note-9)

Shirley Clarkson dressed the stuffed bear in [Wellington boots \(https://en.wikipedia.org/wiki/Wellington_boots\)](https://en.wikipedia.org/wiki/Wellington_boots) to help it stand upright.^[10] [\(https://en.wikipedia.org/wiki/Paddington_Bear#cite_note-10\)](https://en.wikipedia.org/wiki/Paddington_Bear#cite_note-10) (Paddington received Wellingtons for Christmas in *Paddington Marches On*, 1964.)^[11] [\(https://en.wikipedia.org/wiki/Paddington_Bear#cite_note-11\)](https://en.wikipedia.org/wiki/Paddington_Bear#cite_note-11) The earliest bears wore small children's boots manufactured by [Dunlop Rubber \(https://en.wikipedia.org/wiki/Dunlop_Rubber\)](https://en.wikipedia.org/wiki/Dunlop_Rubber) until production could not meet demand. Gabrielle Designs then produced their boots with paw prints moulded into the soles.^[9] [\(https://en.wikipedia.org/wiki/Paddington_Bear#cite_note-9\)](https://en.wikipedia.org/wiki/Paddington_Bear#cite_note-9)

Shirley Clarkson's book^[12] [\(https://en.wikipedia.org/wiki/Paddington_Bear#cite_note-12\)](https://en.wikipedia.org/wiki/Paddington_Bear#cite_note-12) describes the evolution of the toy Paddington from Christmas gift to subject of [litigation \(https://en.wikipedia.org/wiki/Litigation\)](https://en.wikipedia.org/wiki/Litigation) and ultimately commercial success.^[13] [\(https://en.wikipedia.org/wiki/Paddington_Bear#cite_note-13\)](https://en.wikipedia.org/wiki/Paddington_Bear#cite_note-13)

Storyline

In the first story, Paddington is found at [Paddington railway station \(https://en.wikipedia.org/wiki/London_Paddington_station\)](https://en.wikipedia.org/wiki/London_Paddington_station) in London by the Brown family, sitting on his suitcase with a note attached to his coat that reads "Please look after this bear. Thank you." Bond has said that his memories of [newsreels \(https://en.wikipedia.org/wiki/Newsreel\)](https://en.wikipedia.org/wiki/Newsreel) showing trainloads of [child evacuees leaving London during World War II \(https://en.wikipedia.org/wiki/Evacuations_of_civilians_in_Britain_during_World_War_II\)](https://en.wikipedia.org/wiki/Evacuations_of_civilians_in_Britain_during_World_War_II), with labels around their

necks and their possessions in small suitcases, prompted him to do the same for Paddington.^[14] (https://en.wikipedia.org/wiki/Paddington_Bear#cite_note-14)

Paddington arrives as a stowaway coming from “Darkest Peru”, sent by his Aunt Lucy (one of only a few known relatives aside from an Uncle Pastuzo who gave Paddington his hat),^[15] (https://en.wikipedia.org/wiki/Paddington_Bear#cite_note-15) who has gone to live in the Home for Retired Bears in [Lima](https://en.wikipedia.org/wiki/Lima) (<https://en.wikipedia.org/wiki/Lima>). He claims, “I came in a lifeboat, and ate marmalade. Bears like marmalade.” He tells them that no-one can understand his Peruvian name, so the Browns decide to call him Paddington after the railway station in which he was found. Paddington’s Peruvian name is ultimately revealed to be “Pastuso”^[16] (https://en.wikipedia.org/wiki/Paddington_Bear#cite_note-Paddington_website-16) (not to be confused with his “Uncle Pastuzo”).

Bond originally wanted Paddington to have “travelled from darkest Africa”, but his agent advised him that there were no bears in Africa, and thus it was amended to Peru, home of the [spectacled bear](https://en.wikipedia.org/wiki/Spectacled_bear) (https://en.wikipedia.org/wiki/Spectacled_bear).^[17] (https://en.wikipedia.org/wiki/Paddington_Bear#cite_note-17)

They take him home to 32 Windsor Gardens near Notting Hill. While there is a real Windsor Gardens off [Harrow Road](https://en.wikipedia.org/wiki/Harrow_Road) (https://en.wikipedia.org/wiki/Harrow_Road) between [Notting Hill](https://en.wikipedia.org/wiki/Notting_Hill) (https://en.wikipedia.org/wiki/Notting_Hill) and [Maida Vale](https://en.wikipedia.org/wiki/Maida_Vale) (https://en.wikipedia.org/wiki/Maida_Vale) (close to the location as described in the books) the Windsor Gardens in the book is fictitious and does not resemble the real road.^[18] (https://en.wikipedia.org/wiki/Paddington_Bear#cite_note-18)—Paddington frequents the nearby [Portobello Road](https://en.wikipedia.org/wiki/Portobello_Road) (https://en.wikipedia.org/wiki/Portobello_Road) market, where he is respected by the shopkeepers for driving a hard bargain.

When he gets annoyed with someone, he often gives them one of his special “hard stares” (taught to him by Aunt Lucy), which causes them to become flushed and embarrassed. Paddington’s adventures usually arise from him misunderstanding something and trying to right (what he perceives to be) unfair or unjust situations. This typically ends with him messing things up in some way. But in all his adventures, he ends up on top and everyone involved can laugh about it. (A notable exception to this rule is the Browns’ next-door neighbour Mr Curry, who, in every adventure, ends up in trouble.)

The stories follow Paddington’s adventures and mishaps in England, along with some snippets of information about his past. For instance, one story reveals that Paddington was orphaned in an earthquake,^[16] (https://en.wikipedia.org/wiki/Paddington_Bear#cite_note-Paddington_website-16) before being taken in and raised by his Aunt Lucy.

Characters

There is a recurring cast of characters, all of whom are in some way entangled in Paddington’s misadventures. These include:

- Paddington Bear: A friendly, charismatic and polite [bear](https://en.wikipedia.org/wiki/Bear) (<https://en.wikipedia.org/wiki/Bear>) from [Darkest Peru](https://en.wikipedia.org/wiki/Darkest_Peru) (<https://en.wikipedia.org/wiki/Peru>). Paddington was taken in by Aunt Lucy and Uncle Pastuzo after his parents died in an earthquake when he was very young. Paddington moves in with the Browns after Aunt Lucy moves into the Home for Retired Bears. Paddington is usually in some sort of trouble. Paddington’s given name is hard to pronounce (the film establishes that it is a series of roars, and Mr Brown’s attempt to imitate it produces something offensive). Mrs Brown names him after Paddington Station when they’re picking Judy up from boarding school.
- Mr Henry Brown: A hapless but well-meaning City of London Risk Analyst. In the film, Henry initially refuses to let Paddington move in with his family, but he eventually warms to Paddington and builds him a bedroom in their attic.
- Mrs Mary Brown: Henry’s more serious-minded yet exceptionally friendly wife. In the 1989 animated series Mary and her husband have a 12-year-old American nephew named David Russell.
- Jonathan and Judy Brown: The energetic and friendly Brown children. It is never established if one is older than the other, leading to the possibility that they might be twins. It is when they are meeting Judy off the train from

boarding school that the Browns meet Paddington. In the 1975 series and [Paddington \(https://en.wikipedia.org/wiki/Paddington_\(film\)\)](https://en.wikipedia.org/wiki/Paddington_(film)), Judy is older. In the 1989 animated series, and the 1997 animated series Jonathan is older. In the movie Judy and Jonathan are with their parents when they first meet him at Paddington Station, giving him his iconic name.

- Mrs Bird: The Browns' strict but kindly housekeeper. Although she is often annoyed by Paddington's antics and mishaps, she is protective of him. Her first name has never been mentioned.
- Mr Samuel Gruber: Paddington's best friend. The friendly owner of an antique shop on the [Portobello Road \(https://en.wikipedia.org/wiki/Portobello_Road\)](https://en.wikipedia.org/wiki/Portobello_Road), with whom Paddington has his [elevenses \(https://en.wikipedia.org/wiki/Elevenses\)](https://en.wikipedia.org/wiki/Elevenses) every day. He regularly takes Paddington and the Brown children on outings. He is a [Hungarian \(https://en.wikipedia.org/wiki/Hungary\)](https://en.wikipedia.org/wiki/Hungary) immigrant. He addresses Paddington as "Mr Brown".
- Mr Reginald Curry: The Browns' mean, nosy, arrogant and bad-tempered next-door neighbour, who serves as a contrast to Mr Gruber. He addresses Paddington simply as "Bear!" Penny-pinching by nature, Mr Curry always wants something for nothing and often persuades Paddington to run errands for him. He tends to invite himself to many of the Browns' special occasions just to sample the snacks. In most of the stories, he gets his comeuppance as a frequent victim of Paddington's misadventures; however, he does sometimes benefit from Paddington's mistakes and has even rewarded him for them on occasion.
- Lucy: Paddington's aunt from Darkest Peru (the film establishes that she and Uncle Pastuzo rescued Paddington rather than being biologically related to him). She was his legal guardian until she had to move into the Home for Retired Bears in [Lima, Peru \(https://en.wikipedia.org/wiki/Lima,_Peru\)](https://en.wikipedia.org/wiki/Lima,_Peru). Why she had to do this was never made clear, until in the movie when, after a deadly earthquake, she informs Paddington that she is too old to travel to London with him. In the film adaptation, the explorer Montgomery Clyde names her "Lucy" after his mother.
- Pastuzo: Paddington's wealthy globe-trotting uncle, revealed in the film adaptation to have been named by the explorer Montgomery Clyde (who gave him his hat) after a boxer he met in a bar. In the film adaptation, Uncle Pastuzo is killed by a falling tree during an earthquake, and Paddington retrieves his hat.

Film adaptations

In 1975, Alamo Mode released a stop motion film called *A Bear Called Paddington* (1975).
Main article: [Paddington \(film series\) \(https://en.wikipedia.org/wiki/Paddington_\(film_series\)\)](https://en.wikipedia.org/wiki/Paddington_(film_series))

In September 2007, [Warner Bros. \(https://en.wikipedia.org/wiki/Warner_Bros.\)](https://en.wikipedia.org/wiki/Warner_Bros.) and producer [David Heyman \(https://en.wikipedia.org/wiki/David_Heyman\)](https://en.wikipedia.org/wiki/David_Heyman) announced a film adaptation of Paddington Bear. [Hamish McColl \(https://en.wikipedia.org/wiki/Hamish_McColl\)](https://en.wikipedia.org/wiki/Hamish_McColl), who penned [Mr Bean's Holiday \(https://en.wikipedia.org/wiki/Mr_Bean's_Holiday\)](https://en.wikipedia.org/wiki/Mr_Bean's_Holiday), would write the script. The film would not be an adaptation of an existing story, but "draw inspiration from the whole series" and feature a [computer animated \(https://en.wikipedia.org/wiki/Computer_animated\)](https://en.wikipedia.org/wiki/Computer_animated) Paddington Bear interacting with a live-action environment.^[42] [\(https://en.wikipedia.org/wiki/Paddington_Bear#cite_note-42\)](https://en.wikipedia.org/wiki/Paddington_Bear#cite_note-42) [Colin Firth \(https://en.wikipedia.org/wiki/Colin_Firth\)](https://en.wikipedia.org/wiki/Colin_Firth) had been announced to voice Paddington, however he announced his withdrawal on 17 June 2014, saying: "It's been bittersweet to see this delightful creature take shape and come to the sad realization that he simply doesn't have my voice".^[43] [\(https://en.wikipedia.org/wiki/Paddington_Bear#cite_note-43\)](https://en.wikipedia.org/wiki/Paddington_Bear#cite_note-43) In July 2014, it was announced that [Ben Whishaw \(https://en.wikipedia.org/wiki/Ben_Whishaw\)](https://en.wikipedia.org/wiki/Ben_Whishaw) had replaced Firth.^[44] [\(https://en.wikipedia.org/wiki/Paddington_Bear#cite_note-44\)](https://en.wikipedia.org/wiki/Paddington_Bear#cite_note-44) On 25 June 2012, an official teaser poster was released for the film,^[45] [\(https://en.wikipedia.org/wiki/Paddington_Bear#cite_note-45\)](https://en.wikipedia.org/wiki/Paddington_Bear#cite_note-45) stating that it would be released during 2014. A trailer was subsequently released confirming the release to be 28 November 2014. On 17 November 2014, the [British Board of Film Classification \(https://en.wikipedia.org/wiki/British_Board_of_Film_Classification\)](https://en.wikipedia.org/wiki/British_Board_of_Film_Classification) (BBFC) gave the film a [PG \(https://en.wikipedia.org/wiki/British_Board_of_Film_Classification#Current_certificates\)](https://en.wikipedia.org/wiki/British_Board_of_Film_Classification#Current_certificates) certificate and advised

parents that the film contained “dangerous behaviour, mild threat, mild sex references, [and] mild bad language”. [Paul King](https://en.wikipedia.org/wiki/Paul_King_(director)) ([https://en.wikipedia.org/wiki/Paul_King_\(director\)](https://en.wikipedia.org/wiki/Paul_King_(director))), the film’s director, told BBC reporter Tim Muffett: “I’m not surprised about that [the PG certificate] but I don’t think it’s a PG for sexiness. That I would find very odd”. Paddington’s creator, Michael Bond, said he was “totally amazed” at the BBFC’s advice. After the film’s distributor challenged the certification, the BBFC revised the wording of its parental guidance, replacing “mild sex references” with “innuendo”. It also further qualified the “mild bad language” as “infrequent”, saying it referred to “a single mumbled use of ‘bloody’”.^[46] (https://en.wikipedia.org/wiki/Paddington_Bear#cite_note-46)

To celebrate the release of the film, the Paddington Trail was launched.^[47] (https://en.wikipedia.org/wiki/Paddington_Bear#cite_note-47) From 4 November until 30 December 2014, 50 Paddington statues were placed around London close to museums, parks, shops and key landmarks. The statues have been created by artists, designers and celebrities, including supermodel [Kate Moss](https://en.wikipedia.org/wiki/Kate_Moss) (https://en.wikipedia.org/wiki/Kate_Moss), actress [Nicole Kidman](https://en.wikipedia.org/wiki/Nicole_Kidman) (https://en.wikipedia.org/wiki/Nicole_Kidman), and [Downton Abbey](https://en.wikipedia.org/wiki/Downton_Abbey) (https://en.wikipedia.org/wiki/Downton_Abbey) star [Hugh Bonneville](https://en.wikipedia.org/wiki/Hugh_Bonneville) (https://en.wikipedia.org/wiki/Hugh_Bonneville). As the lead charity partner of The Paddington Trail, the [NSPCC](https://en.wikipedia.org/wiki/NSPCC) (<https://en.wikipedia.org/wiki/NSPCC>) held an online auction in November and a live auction in December for the statues. All proceeds from the sale went to charity.

During 2015, it was announced that the studio was in talks with the producer about a sequel.^[48] (https://en.wikipedia.org/wiki/Paddington_Bear#cite_note-Sequel_planned-48) The sequel, titled [Paddington 2](https://en.wikipedia.org/wiki/Paddington_2) (https://en.wikipedia.org/wiki/Paddington_2), was released on 10 November 2017 in the UK to universal acclaim.^[49] (https://en.wikipedia.org/wiki/Paddington_Bear#cite_note-49)

In popular culture



(https://en.wikipedia.org/wiki/File:Paddington_MirafloresLima.JPG)

A statue of Paddington in Parque Salazar, Miraflores, Lima

(https://en.wikipedia.org/wiki/File:Paddington_MirafloresLima.JPG)

Paddington was featured on the [Royal Mail](https://en.wikipedia.org/wiki/Royal_Mail) (https://en.wikipedia.org/wiki/Royal_Mail) 1st class stamp in the Animal Tales series released on 10 January 2006 and had previously been featured on one of the 1st class Greetings Messages stamps, released on 1 February 1994.

There is a Paddington Bear themed hotel in Lawrence Block’s [The Burglar in the Rye](https://en.wikipedia.org/wiki/The_Burglar_in_the_Rye) (https://en.wikipedia.org/wiki/Bernie_Rhodenbarr) (1999).

Paddington Bear featured in the [Marmite](https://en.wikipedia.org/wiki/Marmite) (<https://en.wikipedia.org/wiki/Marmite>) UK TV advertisement (first broadcast on 13 September 2007),^[50] (https://en.wikipedia.org/wiki/Paddington_Bear#cite_note-50) in which he tries a marmite and cheese sandwich instead of his traditional marmalade sandwich.^[51] (https://en.wikipedia.org/wiki/Paddington_Bear#cite_note-51)

On 13 October 2008, [Google](https://en.wikipedia.org/wiki/Google) (<https://en.wikipedia.org/wiki/Google>) celebrated the 50th anniversary of the first Paddington publication by placing an image of the travelling bear with a sign showing [Peru](https://en.wikipedia.org/wiki/Peru) (<https://en.wikipedia.org/wiki/Peru>) and London incorporated into [Google’s logo](https://en.wikipedia.org/wiki/Google's_logo) (https://en.wikipedia.org/wiki/Google_logo).^[52] (https://en.wikipedia.org/wiki/Paddington_Bear#cite_note-52)

In November 2014, a balloon with Paddington Bear was introduced in the [Macy’s Thanksgiving Day Parade](https://en.wikipedia.org/wiki/Macy's_Thanksgiving_Day_Parade) (https://en.wikipedia.org/wiki/Macy's_Thanksgiving_Day_Parade).

A song about Paddington Bear, “[Shine](https://en.wikipedia.org/wiki/Shine_(Gwen_Stefani_song)) ([https://en.wikipedia.org/wiki/Shine_\(Gwen_Stefani_song\)](https://en.wikipedia.org/wiki/Shine_(Gwen_Stefani_song)))” was released on 13 January 2015 by [Gwen Stefani](https://en.wikipedia.org/wiki/Gwen_Stefani) (https://en.wikipedia.org/wiki/Gwen_Stefani) and [Pharrell Williams](https://en.wikipedia.org/wiki/Pharrell_Williams) (https://en.wikipedia.org/wiki/Pharrell_Williams).

As part of the promotion of film and to celebrate cross-cultural links between the UK and Peru, the British embassy and StudioCanal commissioned a statue of Paddington in Parque Salazar in the [Miraflores \(https://en.wikipedia.org/wiki/Miraflores_District,_Lima\)](https://en.wikipedia.org/wiki/Miraflores_District,_Lima) district of the Peruvian capital, which was unveiled in July 2015.

Paddington Bear is also used in marketing for [Robertson's \(https://en.wikipedia.org/wiki/Robertson%27s\)](https://en.wikipedia.org/wiki/Robertson%27s), on the label of their Golden Shred marmalade.

The 2017 [Marks and Spencer \(https://en.wikipedia.org/wiki/Marks_and_Spencer\)](https://en.wikipedia.org/wiki/Marks_and_Spencer) Christmas advertisement for television shows Paddington mistaking a petty criminal for [Santa Claus \(https://en.wikipedia.org/wiki/Santa_Claus\)](https://en.wikipedia.org/wiki/Santa_Claus) and helping him right the wrong by returning the gifts to their rightful owners.

References

Wikipedia contributors. (2021, February 25). Paddington Bear. In *Wikipedia, The Free Encyclopedia*. Retrieved 17:03, March 24, 2021, from https://en.wikipedia.org/w/index.php?title=Paddington_Bear&oldid=1008836135 (https://en.wikipedia.org/w/index.php?title=Paddington_Bear&oldid=1008836135)

CUSTOMIZING YOUR PRESSBOOK

Sample Attribution

Sample Attribution Statement

This chapter is an adaptation of *Natural Disasters and Human Impacts* (<https://web.archive.org/web/20170525041506/http://www.opengeography.org/natural-disasters.html>) (on [Open Geography Education](http://www.opengeography.org/) (<http://www.opengeography.org/>)) (<http://www.opengeography.org/natural-disasters.html>) by R. Adam Dastrup and Maura Hahnenberger, and is used under a [CC BY-SA 4.0 International](https://creativecommons.org/licenses/by-sa/4.0/) (<https://creativecommons.org/licenses/by-sa/4.0/>) license.

H5P Quiz

Insert the short code to add an H5P quiz



An interactive H5P element has been excluded from this version of the text. You can view it online here:

<https://pressbooks.library.torontomu.ca/bearguide/?p=723#h5p-7> (<https://pressbooks.library.torontomu.ca/bearguide/?p=723#h5p-7>)

Indigenous Fonts

Indigenous Names

ᐅᐅᐅᐅ – Cree-English dictionary (<https://glosbe.com/cr/en/%E1%92%8B%E1%94%90%E1%94%AE%E1%92%84>)

Bear – ᐅᐅᐅᐅ

Polar Bear – ᐅᐅᐅᐅ

Embed a YouTube Video

YouTube videos can be embedded by inserting the url for the video in the chapter.



One or more interactive elements has been excluded from this version of the text. You can view them online here:

[#oembed-1](https://pressbooks.library.torontomu.ca/bearguide/?p=729#oembed-1) ([#oembed-1](#))

Audio Files

Listen to the audio file from [LibriVox](https://librivox.org/winnie-the-pooh-by-a-a-milne-5/). (<https://librivox.org/winnie-the-pooh-by-a-a-milne-5/>) Librivox recordings are in the public domain.

Winnie-the-Pooh

Dedication, Introduction, and Dramatis Personae



One or more interactive elements has been excluded from this version of the text. You can view them online here:

<https://pressbooks.library.torontomu.ca/bearguide/?p=734#audio-734-1> (<https://pressbooks.library.torontomu.ca/bearguide/?p=734#audio-734-1>)

In Which We are Introduced to Winnie-the-Pooh and Some Bees, and the Stories Begin



One or more interactive elements has been excluded from this version of the text. You can view them online here:

<https://pressbooks.library.torontomu.ca/bearguide/?p=734#audio-734-2>
(<https://pressbooks.library.torontomu.ca/bearguide/?p=734#audio-734-2>)

In Which Pooh Goes Visiting and Gets into a Tight Space



One or more interactive elements has been excluded from this version of the text. You can view them online here:

<https://pressbooks.library.torontomu.ca/bearguide/?p=734#audio-734-3>
(<https://pressbooks.library.torontomu.ca/bearguide/?p=734#audio-734-3>)

Display of Urls in Web and Print Versions of Book

The best practice for adding links to a web document is to use meaningful words for the link. When readers scan your text, they can quickly understand what you are linking to. This makes the page easier to understand at a glance. Don't repeat the URL as part of the link text — URLs look ugly, and sound even uglier when a screen reader reads them out letter by letter.

Examples

Good:

Playing audio or video of legally-obtained physical media (music or audio visual materials like DVDs or Cds for example) during an in-person class session is 100% legal under [Section 29.5 of the Copyright Act \(https://laws-lois.justice.gc.ca/eng/acts/c-42/page-10.html\)](https://laws-lois.justice.gc.ca/eng/acts/c-42/page-10.html).

Bad:

Playing audio or video of legally-obtained physical media (music or audio visual materials like DVDs or Cds for example) during an in-person class session is 100% legal under Section 29.5 of the Copyright Act.<https://laws-lois.justice.gc.ca/eng/acts/c-42/page-10.html> (<https://laws-lois.justice.gc.ca/eng/acts/c-42/page-10.html>)

Code for adding Url to Print Versions of the Book

With Pressbooks there are options to export the book in a printable pdf format. In this case you will want to include the urls in the print copy so that your reader can locate your reference. This can be done by adding some code to the PDF stylesheet for your book:

```
/* Print urls in print output */
a::after{
  content: " (" attr(href) ") ";
}
```

Web Version with words as links

1. Travel in groups of 3 (or more)
2. Recognize signs that bears may be in the area
3. Put food and garbage away
4. Have bear spray on hand (yes, it's a thing)
5. Don't be aggressive or hostile towards bears if you see them

Source: [How to Avoid Being Eaten by a Black Bear](#)

Print PDF Version with url included

1. Travel in groups of 3 (or more)
2. Recognize signs that bears may be in the area
3. Put food and garbage away
4. Have bear spray on hand (yes, it's a thing)
5. Don't be aggressive or hostile towards bears if you see them

Source: How to Avoid Being Eaten by a Black Bear (<http://www.smithsonianmag.com/science-nature/how-to-avoid-being-eaten-by-a-black-bear-179225111/>)

*PDF version with url
printed out after the text*

Koko Analytics

Each Pressbook has Koko Analytics included. It can be viewed from the main dashboard of the book. Dashboard > Analytics.

In the **Settings** option within Koko Analytics you can customize how Analytics data displays within the dashboard and you have the option to enable a public view of the Analytics.

find your public dashboard here.' The fourth section is 'Default date period' with a dropdown menu showing 'Last 28 days'. A note says: 'The default date period to show when opening the analytics dashboard.' The fifth section is 'Automatically delete data older than how many months?' with an input field showing '60' and the word 'months'. A note says: 'Statistics older than the number of months configured here will automatically be deleted. Set to 0 to disable.' At the bottom left is a red 'Save Changes' button." data-bbox="87 204 604 682"/>

Koko Analytics Settings

Exclude pageviews from these user roles

Administrator
Editor
Author
Collaborator
Subscriber

Visits and pageviews from users with any of the selected roles will be ignored. Use CTRL to select multiple options.

Use cookie to determine unique visitors and pageviews?

☒ Yes ☐ No

Set to "no" if you do not want to use a cookie. Without the use of a cookie, Koko Analytics can not reliably detect returning visitors.

Should your dashboard be publicly accessible?

☒ Yes ☐ No

Set to "yes" if you want your dashboard to be publicly accessible. With this setting enabled, you can [find your public dashboard here](#).

Default date period

Last 28 days ▾

The default date period to show when opening the analytics dashboard.

Automatically delete data older than how many months?

60 months

Statistics older than the number of months configured here will automatically be deleted. Set to 0 to disable.

Save Changes

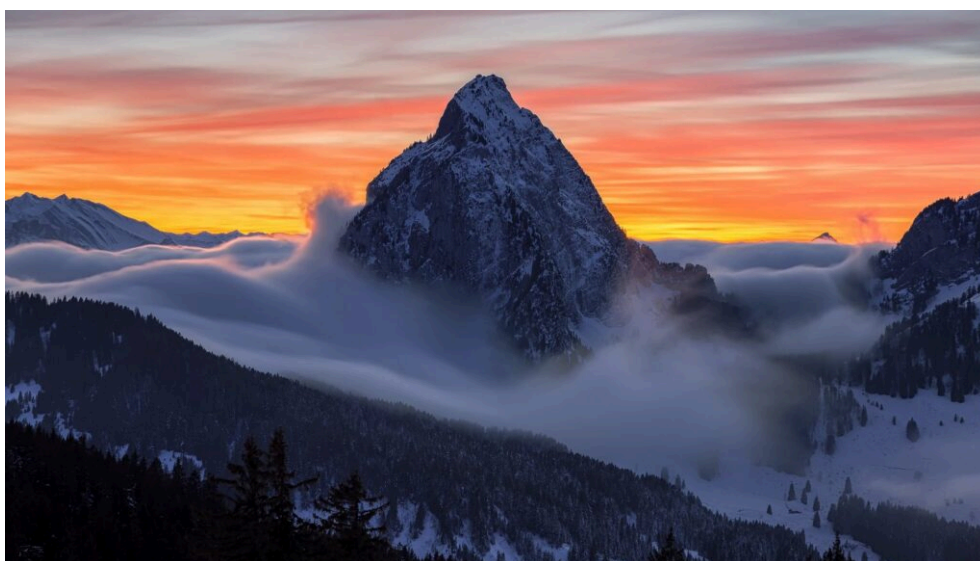
https://pressbooks.library.torontomu.ca/bearguide/wp-content/uploads/sites/9/2024/10/Koko_Analytics_Settings.png

Media Attribution

There are a couple of different ways to add attribution statements to media content in your book. The preferred method is to add the attribution immediately under the image; this keeps the media and the attribution together and makes it easier for someone re-using the image to have both the image and the attribution together.

How to Attribute

Attribution under the Image



[Furggelen afterglow \(https://flickr.com/photos/l Schlagenhauf/38494602082/\)](https://flickr.com/photos/l Schlagenhauf/38494602082/) ” by [Lukas Schlagenhauf \(https://flickr.com/photos/l Schlagenhauf/\)](https://flickr.com/photos/l Schlagenhauf/) is licensed under [CC BY-ND 2.0 \(https://creativecommons.org/licenses/by-nd/2.0/\)](https://creativecommons.org/licenses/by-nd/2.0/).

This is an ideal attribution because it includes the:

- **Title:** “[Furggelen afterglow \(https://flickr.com/photos/l Schlagenhauf/38494602082/\)](https://flickr.com/photos/l Schlagenhauf/38494602082/)”
- **Author:** “[Lukas Schlagenhauf \(https://flickr.com/photos/l Schlagenhauf/\)](https://flickr.com/photos/l Schlagenhauf/)”—with a link to their profile page
- **Source:** “[Furggelen afterglow \(https://flickr.com/photos/l Schlagenhauf/38494602082/\)](https://flickr.com/photos/l Schlagenhauf/38494602082/)”—with a link to the original photo on Flickr
- **License:** “[CC BY-ND 2.0 \(https://creativecommons.org/licenses/by-nd/2.0/\)](https://creativecommons.org/licenses/by-nd/2.0/)”—with a link to the license deed

Attribution of Images at the End of the Chapter

The other method of attribution involves turning on the Media Attribution setting in the Pressbooks dashboard and including the media attribution information with each image uploaded to the Media Library. For this method to work, you must add all attribution information with the uploaded image.

To enable the Media Attributions setting on your book, follow these steps:

1. Click **Appearance** on the left-hand menu of your book's dashboard
2. Click **Theme Options**
3. In the **Global Options** tab, scroll to **Media Attributions**
4. Check the box next to “**Display attributions at the end of a chapter**”
5. Click **Save Changes** at the bottom of the page

McLuhan Theme Options

Global Options | Web Options | PDF Options | Ebook Options

Global Options

These options apply universally to webbook, PDF and ebook exports.

Part and Chapter Numbers ☐ Display part and chapter numbers

Two-Level TOC ☒ Enable two-level table of contents (displays headings under chapter titles)

About the Author ☐ Display information about authors at the end of each chapter

Media Attributions ☒ Display attributions at the end of a chapter

Language & Script Support Include fonts to support the following languages and scripts:

× Canadian Indigenous Syllabics

Attributions will display in the text as follows:

Media Attributions

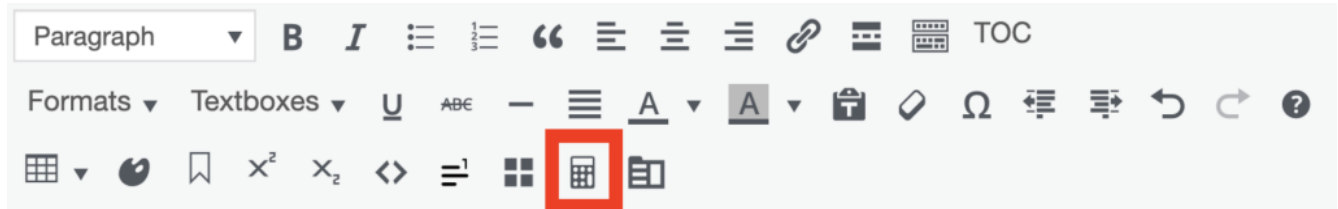
- [furgelen_afterglow](#) © [Lukas Schlagenhauf](#) is licensed under a [CC BY-ND \(Attribution NoDerivatives\)](#) license

In some situation you may not want to have media attributions display (for example a screenshot). To prevent the attribution from displaying do the following:

1. Upload image to Media Library as usual
2. Select the file in the Media Library
3. Delete the text in the title field

LaTeX Examples

LaTeX coding is inserted using the LaTeX icon (looks like a calculator) in the editing toolbar:



In the editor, the coding looks like this:

$$S = \sqrt{\frac{\Sigma(X_i - \bar{X})^2}{N}}$$

and

$$t = \frac{\bar{x}_1 - \bar{x}_2}{\sqrt{\frac{s_1^2}{n_1} + \frac{s_2^2}{n_2}}}$$

but this is how the content renders to the end user:

Examples

Example 1

$$S = \sqrt{\frac{\Sigma(X_i - \bar{X})^2}{N}}$$

Example 2

$$t = \frac{\bar{x}_1 - \bar{x}_2}{\sqrt{\frac{s_1^2}{n_1} + \frac{s_2^2}{n_2}}}$$

Text Boxes

This is a standard text box.

This is a shaded text box.

Examples

Type your examples here.

- First
- Second

Exercises

Type your exercises here.

- First
- Second

Key Takeaways

Type your key takeaways here.

- First
- Second

Learning Objectives

Type your learning objectives here.

- First
- Second

Custom Textbox

Add your custom content here.

- First
- Second

Glossary

arboreal

Tree-living

Artemis

Greek goddess of the hunt and the moon

carnivorous

Eats meat

chaparral shrubland

Shaped by a Mediterranean climate (mild, wet winters and hot dry summers) and wildfire, featuring summer-drought-tolerant plants with hard sclerophyllous evergreen leaves, as contrasted with the associated soft-leaved, drought-deciduous, scrub community of coastal sage scrub, found below the chaparral biome. (Wikipedia)

Diet

(Noun) Kind of food that an animal habitually eats.

Other examples of usage (<https://johnsonsdictionaryonline.com/views/search.php?term=diet>). (Samuel Johnson's Dictionary)

dogwood

Deciduous shrub

hibernate

Sleeps during the winter

Moon

test

Mystery Bear

(*Proper noun*) Shady character, rarely seen

nymph

nature-deity

omnivorous

Diet includes both plants and animals